

DEMAND THE BEST

Clevite performance engine bearings stand up to the pressure

Clevite® performance engine bearings are made of cast copper-lead providing 20% greater strength. Production for the competition utilizes the sintering process.

Casting Process:

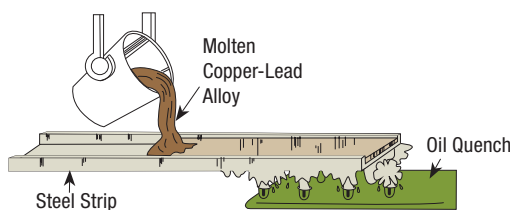
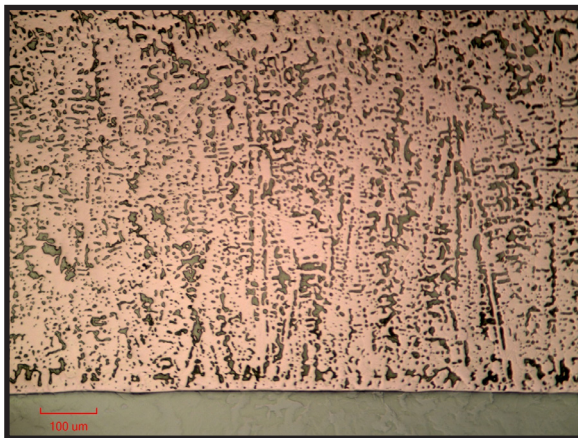
- Copper-lead alloy cast at 2,000°F in an atmosphere controlled furnace
- Copper penetrates the steel to create an indestructible metallurgical bond
- Structural supports are created in the cooling (quenching) process

Sintering Process:

- Copper-lead powder spread on steel strip
- Powdered mixture is sintered, cooled and compacted
- Re-sintered, cooled again and rolled onto a coil
- No structural support and less metallurgical bond due to materials not melted together and quenched

CLEVITE MATERIAL

Cast Copper-Lead



COMPETITOR MATERIAL

Sintered Copper-Lead

